



ABOUT THE INSTITUTE

National Institute of Technology (NIT), Rourkela, was founded as Regional Engineering College, Rourkela, in 1961. It is a prestigious Institute with a reputation for excellence at both undergraduate and postgraduate levels, fostering the spirit of national integration among the students, close interaction with industry and a strong emphasis on basic and applied research. It has been consistently ranked within the TOP 20 engineering institutes for five consecutive years as per MHRD's NIRF Ranking, Govt. of India

Website: www.nitrkl.ac.in



About the Department

The Department of Civil Engineering Started its journey in 1961. Ever since the inception, it has been imparting quality education to undergraduate Students. The department presently Fosters four PG courses. There are about a dozen laboratories with various research and testing facilities. The faculty consists of eminent specialists from diverse fields, and there is a commendable research ambience in the department.

Patron

Prof. K. Umamheshwar Rao,
Director, NIT Rourkela

Chairperson

Prof. Chittaranjan Patra
Head, Civil Engineering Department,
NIT Rourkela

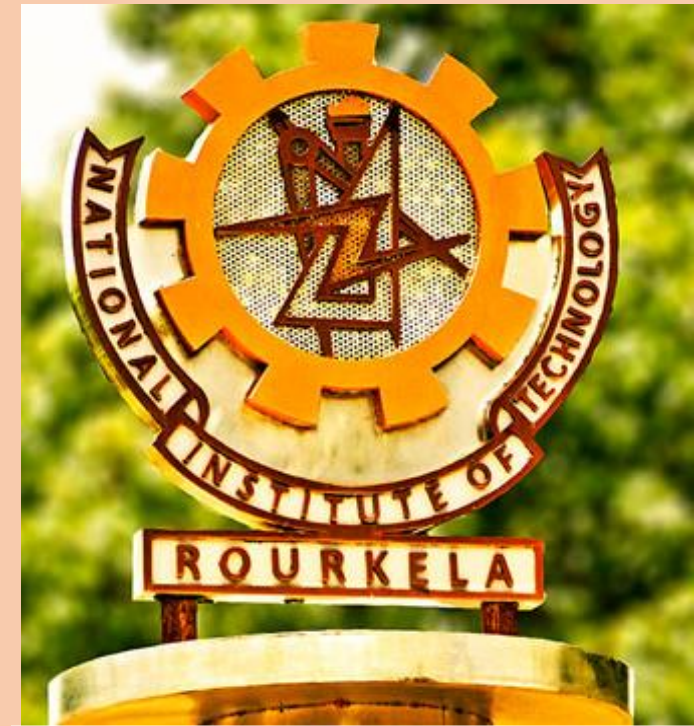
Convenors

Dr. Sanat Nalini Sahoo

Dr. Ratnakar Swain

Advisory Committee

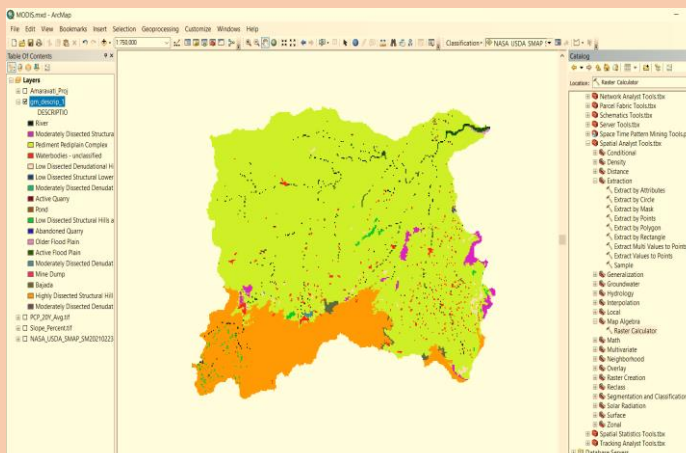
Prof. Kanhu Charan Patra, Prof. Kishanjit Kumar Khatua, Dr. Anurag Sharma, Dr. Minakshee Mahananda, Dr. Jatini Anand



A 5-Day Workshop on Computer Applications in Water Resources Engineering (CAWRE-2023)

(1-5 June 2023) (HYBRID MODE)

Department of Civil Engineering,
National Institute of Technology,
Rourkela



ABOUT CAWRE-2023

CAWRE is an excellent platform for students, researchers, faculties, industry persons, professionals, and Hydrologists to gain knowledge on applications of different computational tools in Water Resources Engineering. Only theoretical knowledge is not sufficient to work in real-field problems. Therefore, this workshop/training mainly focuses on hands-on training on different computational tools for field applications related to water resources engineering. Watershed delineation, Rainfall-runoff simulation, Sediment yield prediction, Dam break analysis, Stormwater management, LULC map preparation, remote sensing application, satellite image processing, River profile study, groundwater recharge estimation and groundwater modelling are such areas of Water resources engineering, which require a thorough knowledge of relevant software and their working. Thus, the main objective of the proposed workshop is hands-on training on some of the essential software used in Water Resources Engineering.

OBJECTIVES

The course is designed for students, academicians, research scholars, industry professionals and scientists in Water Resources Engineering. The prime objective of the course is to provide hands-on training on solving field problems in areas of Water Resources Engineering using different computational tools.

COURSE CONTENT

- ❖ Technical background in ArcGIS, HEC-HMS, HEC-RAS, SWAT and SWMM models.
- ❖ Watershed Delineation and extraction of morphometric parameters.
- ❖ Preparation of the Index map of the study area.
- ❖ Shapefile preparation.
- ❖ Land Use and Land Cover (LULC) mapping.
- ❖ Rainfall-runoff Simulation.
- ❖ Sediment yield estimation.
- ❖ Dam break analysis and flood inundation mapping.
- ❖ Urban drainage system management.

IMPORTANT DATES

Last date for registration	20th May 2023
Confirmation mail	25th May 2023
Workshop dates	1-5 June 2023

Convenors

Dr. Sanat Nalini Sahoo
Asst. Professor

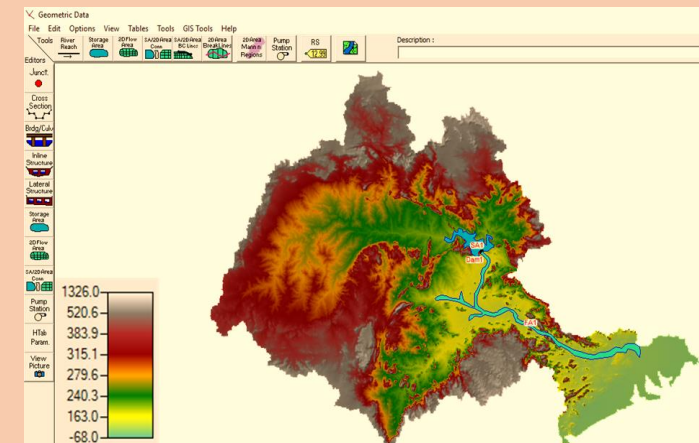
sahoosanat@nitrkl.ac.in, 94375-72808

Dr. Ratnakar Swain

Asst. Professor

swainrk@nitrkl.ac.in, 96681-20536

Department of Civil Engineering, NIT Rourkela



REGISTRATION

The participant can register in the google form <https://forms.gle/WtuAGzEC6xQY34K16>

Registration Fee

For online participants	1500/-
For offline participants	3500/-

Registration fee includes kit, study material, certificate, working lunch and refreshment for offline participants.

Registration fee can be paid online via NEFT/RTGS/IMPS using the following information:

Name: CONTINUING EDUCATION NIT ROURKELA

A/C No.: 10138951784

Bank: State Bank of India

Branch: NIT Campus Rourkela

IFSC Code: SBIN0002109

ACCOMMODATION

Accommodation on payment basis will be available in NIT Guest House as per the availability.

For more Information, visit

<https://sites.google.com/view/cawre-2023/home>