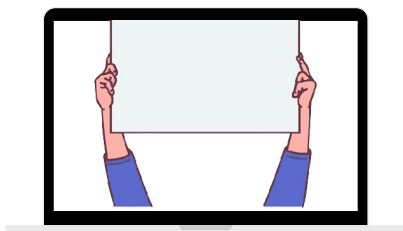
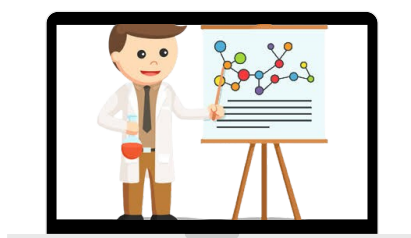




A Five Days Workshop/ Faculty Development Programme
On

FROM BENCH TO BEDSIDE: CHALLENGES IN TRANSLATIONAL BIOMEDICAL RESEARCH

19-23 AUG 2024





About the Institute

NIT Rourkela (the erstwhile Regional Engineering College, renamed on 26th June 2002) is one of the institutes of national importance under the Ministry of Education, Government of India. The government of India has elevated the Regional Engineering College, Rourkela to an autonomous institution under the name of the National Institute of Technology, Rourkela. <https://nitrkl.ac.in>

Rankings - 2023

ONE STEP TOWARDS SUCCESS

16
NIRF Engg.

8
NIRF Arch.

29
NIRF Research

37
NIRF Overall

About the Department

The Department of Biotechnology and Medical Engineering was established in 2007 with the objective of providing a multidisciplinary research and teaching program in Biotechnology and Medical Engineering that advances fundamental understanding of how biological systems operate and to develop effective biology-based technologies for applications across a wide spectrum of societal needs including innovations in diagnosis, therapy of human diseases, design of novel biomaterials, biomedical devices, and in solving environmental hazard. The faculty members have diverse research interests and they conduct both basic and applied research in diverse areas such as Cell & Molecular Engineering, Tissue Engineering & Biomaterials, Bioprocess Engineering, Environmental & Plant Biotechnology, Biomechanics & Biotransport Engineering, and Medical Electronics & Instrumentation.

Vision of the Department - To become a globally recognized department of higher learning that aims to produce quality engineers, technologists and innovators in the field of Biotechnology and Biomedical Engineering for solving technological challenges with socio-ethical implications for the benefit of humanity.

Mission of the Department - To advance knowledge and skills in the fields of Biotechnology and Biomedical engineering with a motivation to produce globally competitive professionals and researchers. To create wealth and welfare for the fulfillment of societal needs by solving technological challenges with socio-ethical implications. To create a multi-disciplinary educational curriculum, research opportunities, and collaboration that promote creativity, innovation, invention, and entrepreneurship for the growth of the nation.

About the Workshop

The Workshop on "From Bench to Bedside: Challenges in Translational Biomedical Research" aims to provide participants with a comprehensive understanding of techniques and their application in biomedical research. The course delivery will be centered on the thematic focus on Translational Biomedical Research where sessions will be conducted in well-equipped laboratories involving,

- Bio-AFM
- 3D Bio-printing,
- Cell Culture Facility
- Confocal Microscopy

The conference will serve as the best platform to learn and share new ideas in the area by connecting the stakeholders involved, particularly students, faculties, engineers, doctors, entrepreneurs, incubators, and enthusiasts. The conference will serve to inspire the new generation of bioengineers to come up with novel, translatable ideas to meet the needs of the national and international community.

Prospective participants

Students who are in their studies at undergraduate and postgraduate level, research scholars, post-doctoral fellows, and faculty members of colleges and universities, scientists and industry professionals are highly encouraged for the program.

Call for abstracts

As part of the interactive sessions, participants are encouraged to present their works at **oral/ poster** centered on the thematic scope of the workshop. All accepted papers will be published in souvenir (the workshop proceedings). *Events also include **Poster Presentation, Bio Idea Pitch**, and **Scientific Photography**.

- Please send your abstract for review at ravikant.nitr@gmail.com
- Poster may be prepared on a standard template ~27"x 40"
- Further guidelines relating to events will be shared in due course of time.

PATRON

Prof. K. Umamaheshwar
Rao, Director

CHAIRMAN

Prof. Kunal Pal, HoD, BM

CONVENORS

Prof. Ravi Kant Awari
Prof. Devendra Verma

Organizing Committee

Prof. Krishna Pramanik
Prof. Subhankar Paul
Prof. Mukesh Kumar Gupta
Prof. A Thirugnanam
Prof. Nandini Sarkar
Prof. Balasubramanian P
Prof. Bibhukalyan Prasad N
Prof. Mirza Khalid Baig
Prof. Amit Biswas
Prof. Earu Banoth
Prof. Prasoon Kumar
Prof. Kasturi Dutta
Prof. Angana Sarkar
Prof. Anju R. Babu
Prof. Nivedita Patra
Prof. Sivaraman J
Prof. Bala Chakravarthy N
Prof. Amrita Singh
Prof. Anamika Singh
Prof. Lohit Kumar Srinivas G

Student Coordinators

Ms. Shreya Chrungoo
Mr. Nimbali Kalita
Mr. Ritvish Gupta
Mr. Samadrita Roy
Ms. Pratyusa Sar
Ms. Ankita Nath
Mr. Supradeep Sahoo
Ms. Aishwarya Swain
Mr. Ashish Bhattarai
Ms. Isha Biswas
Ms. Rajashree Patra
Ms. Bipasa Koch
Ms. Shallbony Biswas

Registration

Please register for the workshop using the following link,
<https://forms.gle/ERaJ71gEDrnf3MfA>

Participants	Indian		Foreign	
	Early Bird 31 Mar	Late Reg. 30 Apr	Early Bird 31 Mar	Late Reg. 30 Apr
UG/ PG/ Scholars	₹ 3000	₹ 3500	\$ 150	\$ 175
Academicians	₹ 4000	₹ 5000	\$ 200	\$ 250
Industry	₹ 6000	₹ 7000	\$ 300	\$ 350

*includes GST; #registration for student/ staff of NIT Rourkela is free; Registration includes - conference kit, high tea, breakfast and lunch. On spot registration will include extra charge of Rs. 1000 or 50 USD. #For delegates, accommodation will be arranged at the guest house. %For participants, arrangements will be made for accommodation within the campus, however, subject to availability. Participants may also prefer staying at hotels in Rourkela city. Please note that accommodation charged to be borne by the participants

Payment should be made through an Online transfer/ DD in favor of "Continuing Education, NIT Rourkela" payable at SBI, NIT Branch to Account No.: 10138951784, IFSC: SBIN0002109, MICR: 769002007, SWIFT: SBININBB137

Sponsorship

Platinum	Diamond	Gold	Silver
₹3,00,000	₹1,50,000	₹ 70,000	₹ 40,000

*includes complementary registration, stall for product demo, banners, advertisements on banners and souvenir.

Contact Details

- Prof. Ravi Kant Awari | +91 98668 59277
- Ms. Ankita Nath (Scholar) | +91 79803 54350
- Ms. Shallbony Biswas (UG) | +91 85975 57147