

About NIT-Rourkela

National Institute of Technology Rourkela (NITR), formerly Regional Engineering College Rourkela (REC Rourkela), established in 1961 and an institute of national importance created under the act of parliament. As per the Times Higher Education World University Rankings of 2018, NIT Rourkela has the position in between 601-800 in the world and 126 in Asia. QS BRICS overall University Ranking 2019 has figured NIT Rourkela at 121st position. More Diverse and multicultural environment of research enhanced its position from last year's 126th position.

How to Reach

By Road - Rourkela is well connected by State Highway no. 10 and National Highway no. 23. It connects to the cities like Ranchi, Raipur, Sambalpur, Bhubaneswar etc.

By Rail - Rourkela railway station is 7 km away from the NIT campus. The Howrah-Mumbai line and Ranchi-Bhubaneswar line passes through this city.

Turist Places



Organizing Committee

Convenor: Prof. Ajit Behera

Co-Convenor: Prof. A. Patra

Treasurer: Prof. R. K. Prusty

Chairman: Prof. S. Sarkar (HOD, MM)

Address for Correspondence

Dr. Ajit Behera

Assistant Professor (Dept. of MME)

Phone: +91-661-2462575 (Office)

Mobile: +91-9938383765

Email: beherajit@nitrrkl.ac.in

Important Dates

Abstract Submission Deadline: 09 September 2019

Notification of Acceptance: 07 October 2019

Final Paper Submission Deadline: 28 October 2019

Registration Deadline for Authors: 28 October 2019

2nd International Conference on Processing and Characterization of Materials (ICPCM-2019)



Organized
By

Department of Metallurgical and Materials
Engineering
National Institute of Technology
Rourkela – 769008, India



Date and Venue

**12th -14th December,
2019**

**BBA auditorium, NIT
Rourkela**

Theme I

- **Materials Processing**



- **Surface Engineering**



- **Metallurgical Waste Utilization**

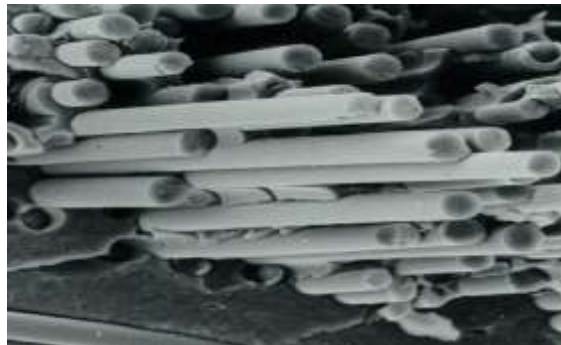


Theme II

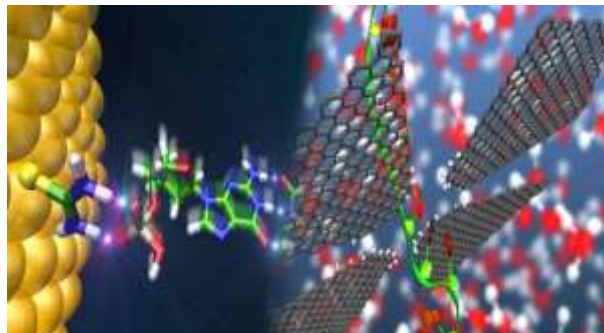
- **Materials Characterization**



- **Composite**



- **Sustainable Energy Materials**



Theme III

- **Advanced Materials**



- **Aero-vehicle Materials**



- **Simulation and Modelling of Material**

