

## Major Themes of this Conference

- Urban Microclimate & Surface Interactions
- Urban Land-Atmosphere Interactions
- Extreme Weather Analysis & Forecasting
- Geospatial Technologies in Meteorology
- Urban Heat Islands & Thermal Extremes
- Hydrometeorology & Urban Flooding
- Modeling & Observational Techniques
- Hydrological Extremes in Cities
- Technological Innovations
- Public Health & Socio-Economic Resilience
- Climate Change
- Resilience, Mitigation, Planning, and Policy
- Any other relevant studies



Visit CCR Lab home page

## Organizing Committee

### Patron

**Prof. K. Umamaheshwar Rao**  
(Hon. Director, NIT Rourkela)

### Head of Department

**Prof. Naresh Krishna Vissa**

Department of Earth & Atmospheric  
Sciences NIT Rourkela

### Chairman and Convenor

**Prof. Nagaraju Chilukoti**

Department of Earth & Atmospheric  
Sciences NIT Rourkela

### Secretary and Co-Convenor

**Prof. Krishna Kishore Osuri**

Department of Earth & Atmospheric  
Sciences NIT Rourkela

### Address for Communication

Prof. Nagaraju Chilukoti,  
Climate Change Research Lab  
Department of Earth & Atmospheric  
Sciences NIT Rourkela,  
Rourkela-769008,  
Contact:+91-8125817908  
Email: [chilukotin@nitrkl.ac.in](mailto:chilukotin@nitrkl.ac.in)

Prof. Krishna Kishore Osuri  
Department of Earth & Atmospheric  
Sciences NIT Rourkela,  
Email: [osurik@nitrkl.ac.in](mailto:osurik@nitrkl.ac.in)

## National Conference on Urban Extreme Weather Events: Role of Urbanization and Land Use Land Cover Change

Jul 29- 31, 2026



**Organized By**

**Department of Earth and  
Atmospheric Sciences  
National Institute of  
Technology Rourkela  
Odisha-769008**

**Sponsored  
By**



**Anusandhan  
National  
Research  
Foundation**

## About Institute

National Institute of Technology (NIT) Rourkela is a highly prestigious institute with a reputation for excellence in research, consultancy and education at undergraduate, postgraduate and doctoral levels. It is passionately committed to making our country a world leader in technology and science and to inculcate this commitment among all its students. Our target is to be known around the world for our academic standards and to be counted among the best technological institutes of India in terms of innovation, entrepreneurship and creation of intellectual wealth. The Institute's graduates have been great performers at professional fronts in India and abroad. With the focus on teaching and learning across departmental boundaries, the mix-technology and management skills, NITians have been valuable assets to our country.

Visit [www.nitrkl.ac.in](http://www.nitrkl.ac.in)

## About the Department

The Department of Earth and Atmospheric Science is set up to provide state of the art education and research in earth, climate and ocean sciences. Earth and Atmospheric Science is a strongly interdisciplinary subject which links different resources (e. g. minerals, energy and water), natural hazards, environmental issues, and also serves as a significant relation to weather and climate, which is inevitable for human life and our society.

The department would be playing a vital role in providing resourceful man power through interdisciplinary way of teaching and research programmes. The academic activities are oriented towards achieving fundamental understanding of the interaction among lithosphere, hydrosphere, atmospheric and oceanic processes for sustainable development. The department would focus on the exploration of economically important mineral and energy resources, evolution and internal dynamics of Earth, surficial processes, natural & human-induced hazards, groundwater, environmental issues, weather and climate and air quality modelling.

### Fee Details:

**Student/Scholar – 1,000**

**Faculty/Scientist – 2,000**

**Industry – 5,000**

### Financial Support

*Limited financial support will be provided to selected students and researchers*

### Registration link:

<https://forms.gle/EnnhHN8StCFE03Q89>



**Scan here  
for  
registration  
Last Date  
05-Jun-2026**

## National Conference on

# Urban Extreme Weather Events: Role of Urbanization and Land Use Land Cover Change Jul 29- 31, 2026

## Organized by



## Aims of the Conference

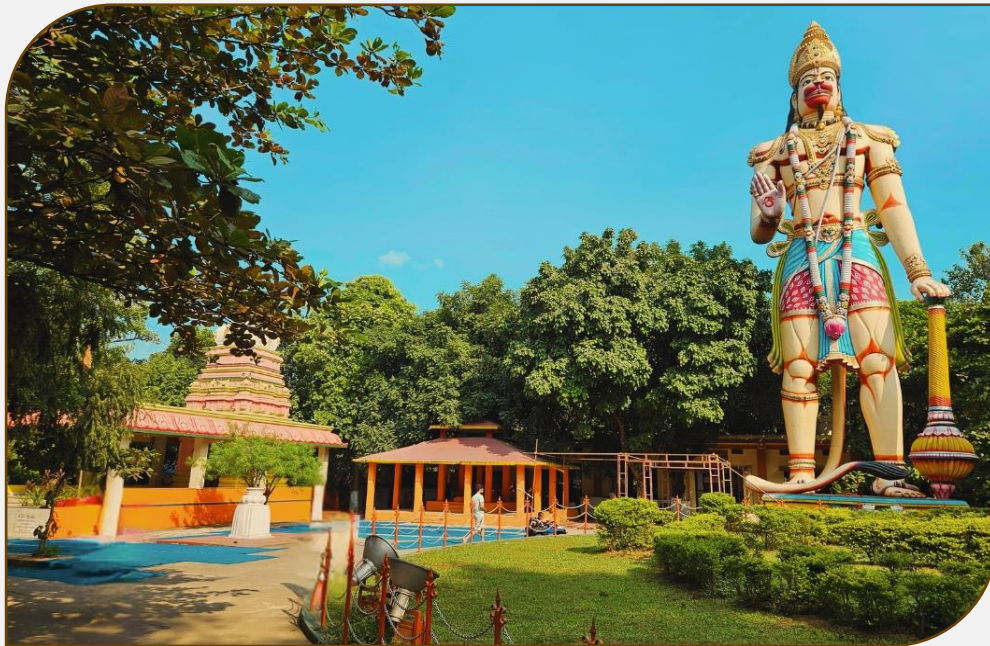
The conference focused on how rapid Land Use and Land Cover Change (LULCC) alters surface energy balances and contributes to the intensification of Urban Heat Islands (UHI). To examine the frequency, intensity, and duration of urban extreme events—such as flash floods, heatwaves, and severe convective storms—specifically in the context of expanding urban footprints. To discuss advancements in high-resolution numerical weather prediction models and land surface modeling (LSM) that better represent urban canopy effects. To identify mitigation and adaptation strategies, such as "Green and Blue" infrastructure, that can minimize the vulnerability of urban populations to climate extremes.

# Explore Rourkela: The Steel City of Odisha

*Rourkela, known as the Steel City of Odisha, is surrounded by scenic hills, rivers, temples, waterfalls, and beautiful parks. This brochure highlights some of the most popular tourist attractions in and around Rourkela for visitors and conference delegates.*

**Hanuman Vatika:** Home to one of the tallest Hanuman statues in Asia (75 feet). The beautifully landscaped garden also houses several temples, making it a peaceful retreat.

**Vedavyas Temple:** Located at the confluence of the Sankha, Koel, and Saraswati rivers, this is believed to be the birthplace of Maharishi Vyas, the author of the *Mahabharata*.



# Explore Rourkela: The Steel City of Odisha

**Indira Gandhi Park:** A massive 42-acre park featuring a zoo, a musical fountain, a doll museum, and a lake with boating facilities.



**Tensa Hill Station:** A high-altitude destination offering cool breezes and a bird's-eye view of the iron ore mines and dense forests.



# Explore Rourkela: The Steel City of Odisha

**Khandadhar Waterfall** is a spectacular ~800 ft high horse-tail waterfall in Sundargarh district, Odisha, often recognized as the 12th highest in India and second highest in the state.

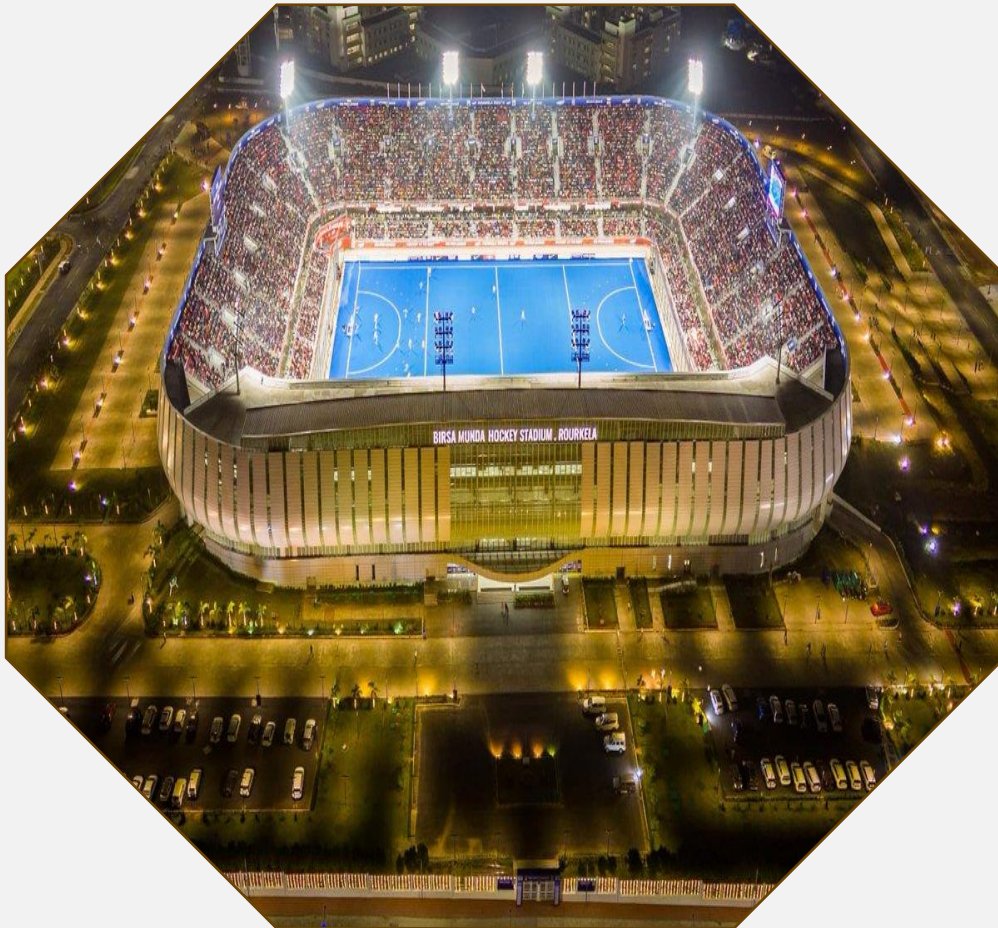


**Badaghagra Waterfall** is a scenic waterfall near Rourkela surrounded by lush greenery, making it a refreshing spot for nature lovers.

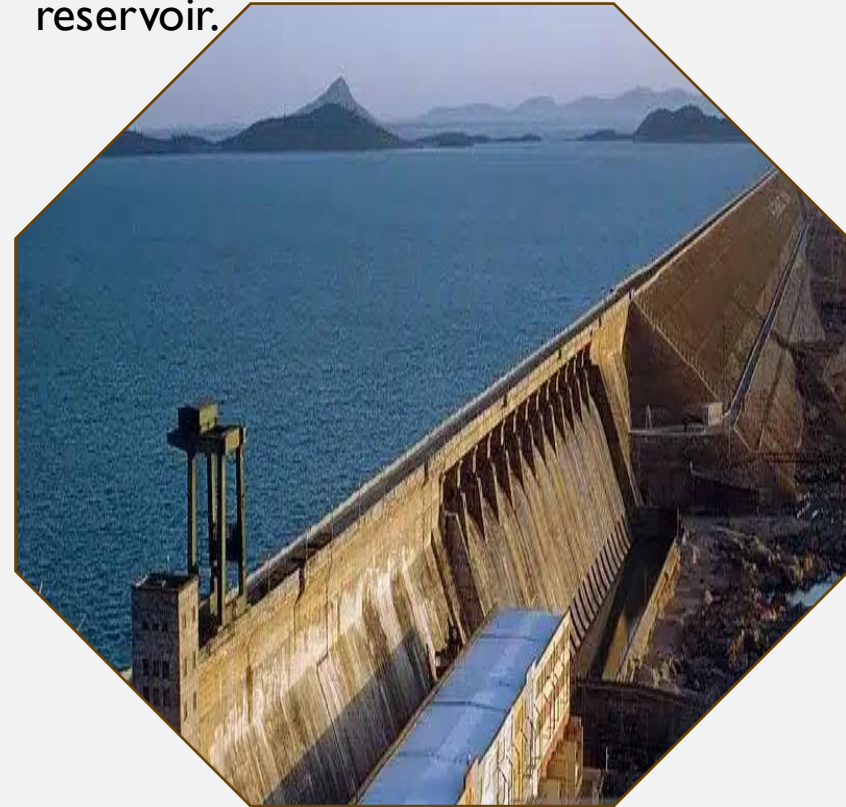


# Explore Rourkela: The Steel City of Odisha

**Birsa Munda International Hockey Stadium:** Visit the world's largest seated hockey stadium, a testament to the region's deep-rooted passion for the sport.



**Hirakud Dam:** One of the world's longest earthen dams. For the best views, head to the **Gandhi Minar** or Jawahar Minar observation towers. You can also take a scenic drive along the 21 km Dyke Road that stretches across the reservoir.



# Explore Rourkela: The Steel City of Odisha

**Vaishno Devi Temple:** A stunning replica of the famous shrine in Jammu, perched atop Durgapur Hill, offering a panoramic view of the entire city.



**Samaleswari Temple:** The 16th-century shrine of the presiding deity, Shree Shree Maa Samaleswari. It is a major center of spiritual energy and a fine example of Chauhan architecture.



# How to reach NIT Rourkela



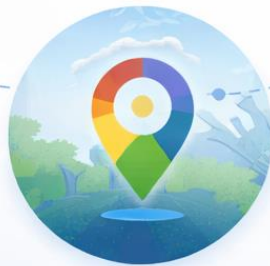
## Rourkela Railway Station

Direct trains from  
major cities



## Veer Surendra Sai Airport, Jharsuguda

2 hour drive to NIT Rourkela



## Google Maps

Search for NIT Rourkela



## Rourkela Bus Services

State and private buses available



For more details, contact Prof. Nagaraju Chilukoti  
8125817908 / [chilukotin@nitrkl.ac.in](mailto:chilukotin@nitrkl.ac.in)